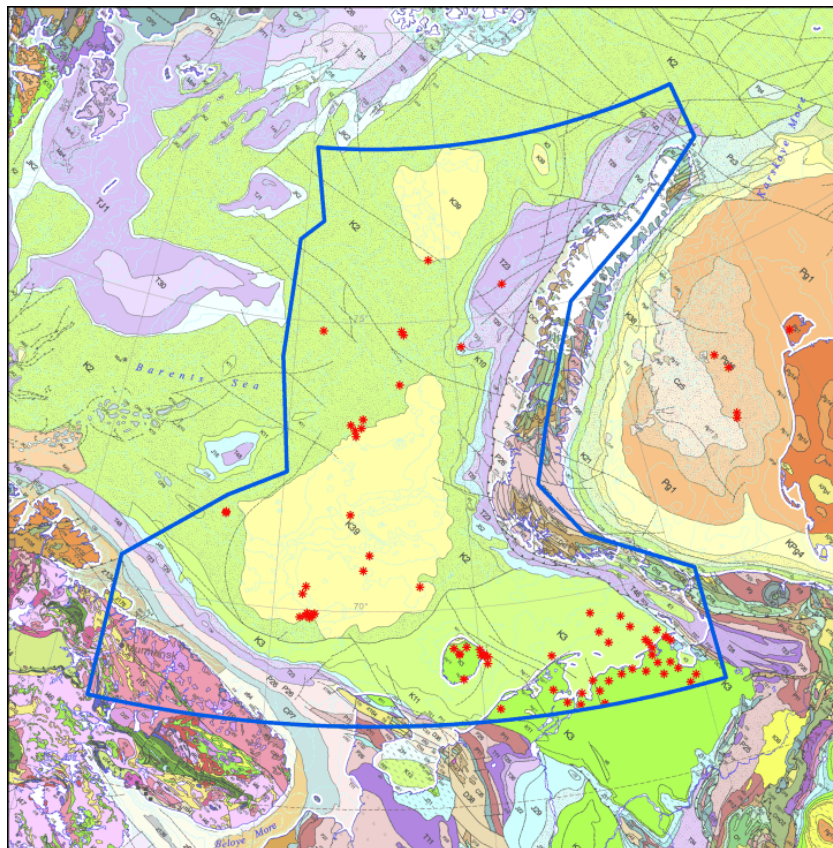


GEOLOGY AND HYDROCARBON SYSTEMS OF THE EASTERN BARENTS SEA

A REGIONAL STUDY REPORT



ArcGeoLink Ltd. (UK)

IN COOPERATION WITH OOO GEOLTSENER SPBSU (ST. PETERSBURG, RF)

GEOLOGY AND HYDROCARBON SYSTEMS OF THE EASTERN BARENTS SEA

The report provides one of the most recent compilations of the public-domain data on geology and hydrocarbon systems of the Russian Barents Sea and the offshore part of the Timan-Pechora Province. It consists of 125 pages including 57 illustrations, and an Appendix containing detailed information on 16 wells drilled in the Barents Sea including lithology, stratigraphy and biostratigraphy. The report is accompanied by an ArcGIS database that includes geological map of the studied region, 9 paleogeographic maps, 4 depth structure maps, 4 isopach maps, locations of the cross-sections, drilled wells, hydrocarbon fields, prospects, leads and many supporting georeferenced published maps and datasets.

Table of Contents:

EXECUTIVE SUMMARY

1. INTRODUCTION

2. TECTONIC SETTING AND MAIN STRUCTURAL ELEMENTS

3. REGIONAL STRATIGRAPHIC FRAMEWORK

3.1. Precambrian basement

3.2. Paleozoic sedimentary successions

3.2.1. Cambrian

3.2.2. Ordovician

3.2.3. Silurian

3.2.4. Devonian

3.2.5. Carboniferous

3.2.6. Permian

3.3. Mesozoic sedimentary successions

3.3.1. Triassic

3.3.2. Jurassic

3.3.3. Cretaceous

3.4. Cenozoic sedimentary successions

4. PALEOGEOGRAPHY AND PROVENANCE

4.1. Devonian to Early Permian

4.2. Late Permian to Early Cretaceous

4.3. Late Cretaceous – Cenozoic uplift

5. EAST BARENTS SEA PETROLEUM GEOLOGY

5.1. Pre-Upper Devonian play interval

5.2. Upper Devonian – Lower Permian play interval

5.3. Upper Permian - Triassic play interval

5.4. Jurassic play interval

5.5. Cretaceous play interval

6. CONCLUSION

7. REFERENCE LIST

APPENDIX: Barents Sea wells: compilation of data on well lithology and biostratigraphy

List of illustrations:

- FIGURE 1.1. LOCATION MAP OF THE EASTERN BARENTS SEA.
- FIGURE 2.1. TECTONIC MAP OF THE EASTERN BARENTS SHELF.
- FIGURE 2.1A. CROSS-SECTION ILLUSTRATING STRUCTURE OF OFFSHORE EXTENT OF TIMAN-PECHORA TECTONIC PROVINCE.
- FIGURE 2.1B. CROSS-SECTION ILLUSTRATING STRUCTURE OF SOUTHERN PART OF THE RUSSIAN BARENTS SHELF.
- FIGURE 2.2. TOP BASEMENT DEPTH MAP.
- FIGURE 2.3. TOP MIDDLE CARBONIFEROUS-LOWER PERMIAN CARBONATE SUCCESSION DEPTH MAP.
- FIGURE 2.4. TOP PERMIAN-TRIASSIC CLASTIC SUCCESSION DEPTH MAP.
- FIGURE 2.5. TOP UPPER JURASSIC DEPTH MAP.
- FIGURE 2.6. CRUSTAL DOMAINS MAKING UP CONSOLIDATED BASEMENT OF THE BARENTS SHELF.
- FIGURE 2.7. SEISMO-STRATIGRAPHY AND MAIN TECTONIC EVENTS OF THE BARENTS SEA.
- FIGURE 2.8. SCHEMATIC DIAGRAM ILLUSTRATING PLATE-TECTONIC SETTING AND DEPOSITIONAL ENVIRONMENTS OF THE EAST BARENTS AND SOUTH KARA IN EARLY PERMIAN TIME.
- FIGURE 3.1. GEOLOGICAL MAP OF THE RUSSIAN BARENTS SEA.
- FIGURE 3.1A. GEOLOGICAL CROSS-SECTION ALONG LINE A-A'.
- FIGURE 3.2. CORRELATION CHART OF STRATIGRAPHIC UNITS MAPPED IN THE EAST BARENTS SEA AND ADJOINING TIMAN-PECHORA PROVINCE AND NOVAYA ZEMLYA ARCHIPELAGO.
- FIGURE 3.3. CORRELATION OF THE PALEOZOIC STRATIGRAPHY OF THE FINMARK PLATFORM AND KOLA MONOCLINE
- FIGURE 3.4. STRATIGRAPHIC CHART OF THE NOVAYA ZEMLYA ARCHIPELAGO.
- FIGURE 3.5. STRATIGRAPHIC CHART OF THE TIMAN-PECHORA ONSHORE PROVINCE.
- FIGURE 3.6. STRATIGRAPHIC CHART OF THE TIMAN-PECHORA OFFSHORE AREA.
- FIGURE 3.7. N-S GEOLOGICAL CROSS-SECTION ACROSS RUSSIAN BARENTS SEA.
- FIGURE 3.8. W-E GEOLOGICAL CROSS-SECTION ACROSS RUSSIAN BARENTS SEA.
- FIGURE 3.9. THICKNESS MAP OF DEVONIAN TO LOWER PERMIAN SUCCESSION.
- FIGURE 3.10. STRATIGRAPHIC COLUMNS OF MURMANSKAYA-24, SEVERNAYA MURMANSKAYA -1 AND KURENTOVSKAYA-1 WELLS.
- FIGURE 3.11. STRATIGRAPHIC COLUMNS OF FERSMANOVSKAYA-1, ADMIRALTEYSKAYA-1 AND LUNINSKAYA-1 WELLS.
- FIGURE 3.12. STRATIGRAPHIC COLUMNS OF SHTOKMANOVSKAYA-1 AND LEDOVAYA-1.
- FIGURE 3.13. STRATIGRAPHIC COLUMNS OF ARCTICHESKAYA-1 AND SEV. KILDINSKAYA -80 WELLS.
- FIGURE 3.14. STRATIGRAPHIC COLUMNS OF KRESTOVAYA-1 AND LUDLOVSKAYA-1 WELLS.
- FIGURE 3.15. THICKNESS MAP OF PERMIAN-TRIASSIC CLASTIC SUCCESSION.
- FIGURE 3.16. THICKNESS MAP OF JURASSIC CLASTIC SUCCESSION.
- FIGURE 4.1. LATE DEVONIAN DEPOSITIONAL ENVIRONMENTS OF THE CENTRAL AND EASTERN BARENTS REGION.
- FIGURE 4.2. EARLY CARBONIFEROUS VISEAN DEPOSITIONAL ENVIRONMENTS OF THE CENTRAL AND EASTERN BARENTS REGION.
- FIGURE 4.3. EARLY PERMIAN ASSELIAN DEPOSITIONAL ENVIRONMENTS OF THE CENTRAL AND EASTERN BARENTS REGION.
- FIGURE 4.4. LATE PERMIAN KAZANIAN/UFIMIAN DEPOSITIONAL ENVIRONMENTS OF THE CENTRAL AND EASTERN BARENTS REGION.
- FIGURE 4.5. EARLY TRIASSIC INDUAN DEPOSITIONAL ENVIRONMENTS OF THE CENTRAL AND EASTERN BARENTS REGION.
- FIGURE 4.6. MIDDLE TRIASSIC ANISIAN DEPOSITIONAL ENVIRONMENTS OF THE CENTRAL AND EASTERN BARENTS REGION.
- FIGURE 4.7. LATE TRIASSIC CARNIAN DEPOSITIONAL ENVIRONMENTS OF THE CENTRAL AND EASTERN BARENTS REGION.
- FIGURE 4.8. DETRITAL ZIRCON AGE DATA FOR THE LOWER AND MIDDLE JURASSIC SUCCESSION, BARENTS SEA.

- FIGURE 4.9. MIDDLE JURASSIC BATHONIAN DEPOSITIONAL ENVIRONMENTS OF THE CENTRAL AND EASTERN BARENTS REGION.
- FIGURE 4.10. LATE JURASSIC TITHONIAN DEPOSITIONAL ENVIRONMENTS OF THE CENTRAL AND EASTERN BARENTS REGION.
- FIGURE 4.11. RELATIONSHIP BETWEEN VITRINITE REFLECTANCE AND DEPTH FOR THE PESCHANOZERSKAYA (KOLGUEV ISLAND) AND LUDLOVSKAYA-1 WELLS, AND EVALUATION OF CENOZOIC UPLIFT.
- FIGURE 4.12. RELATIONSHIP BETWEEN ACOUSTIC WAVE TRAVEL TIME AND DEPTH FOR SHALES IN SHTOKMANOVSKAYA-1 WELL.
- FIGURE 4.13. ESTIMATION OF CENOZOIC UPLIFT MAGNITUDE FOR THE EASTERN BARENTS SEA WELLS.
- FIGURE 4.14. LATE CRETACEOUS – CENOZOIC UPLIFT/EROSION ESTIMATES FOR THE SOUTHEAST PART OF THE BARENTS SEA.
- FIGURE 5.1. MAP SHOWING LOCATION OF THE DISCOVERED HYDROCARBON FIELDS, DRILLED PROSPECTS, READY-TO-DRILL PROSPECTS AND MAPPED LEADS IN THE RUSSIAN BARENTS SEA, PECHORA SEA AND ADJACENT ONSHORE TIMAN-PECHORA.
- FIGURE 5.2. CARBONIFEROUS CARBONATE BUILD-UPS OF THE MITYUSHIKHINSKAYA LEAD.
- FIGURE 5.3. OCCURRENCE OF THE CARBONIFEROUS-LOWER PERMIAN CARBONATE BUILD-UPS AND THICKNESS OF THE CARBONIFEROUS-LOWER PERMIAN SUCCESSION IN THE EAST BARENTS SEA.
- FIGURE 5.4. CARBONATE BUILD-UP IN LOWER PERMIAN STRATA OF DOLGINSKOYE FIELD.
- FIGURE 5.5. STRUCTURE MAP FOR THE TOP OF LOWER PERMIAN ASSELIAN CARBONATES OF THE PRIRAZLOMNOE FIELD.
- FIGURE 5.6. STRUCTURE OF THE PRIRAZLOMNOE FIELD.
- FIGURE 5.7. THIN-SECTIONS OF LOWER PERMIAN ASSELIAN RESERVOIRS OF PRIRAZLOMNOE FIELD.
- FIGURE 5.8. FRAGMENT OF SEISMIC LINE SHOWING CRETACEOUS BASALT SILLS IN THE TRIASSIC SECTION OF THE RUSSIAN BARENTS SHELF.
- FIGURE 5.9. FRAGMENT OF SEISMIC TIME SECTION IN THE AREA OF DEVELOPMENT OF THE TRIASSIC PALEO FLUIDAL SYSTEM.
- FIGURE 5.10. FRAGMENT OF SEISMIC TIME SECTION ACROSS THE KOLA MONOCLINE AND SOUTH-BARENTS DEPRESSION.
- FIGURE 5.11. STRUCTURE OF THE SEVERO-GULYAEVSKOYE OIL FIELD.
- FIGURE 5.12. STRUCTURE OF THE MURMANSK GAS FIELD.
- FIGURE 5.13. ORGANIC MATTER AND BITUMEN IN UPPER JURASSIC SHALES OF THE ARKTICHESKAYA WELL.
- FIGURE 5.14. MESOZOIC OIL FAMILIES OF THE BARENTS SEA AND TIMAN-PECHORA BASINS.
- FIGURE 5.15. STRUCTURE OF THE SHTOKMAN GAS-CONDENSATE FIELD.

List of attachments (Appendix)

- ATTACHMENT 1. Location map of the drilled wells (PDF and ArcGIS)
- ATTACHMENT 2. Admiralteyskaya 1 well composite panel (PDF)
- ATTACHMENT 3. Akvamarinskaya 1 well composite panel (PDF)
- ATTACHMENT 4. Akvamarinskaya 2 well composite panel (PDF)
- ATTACHMENT 5. Arkticheskaya 1 well composite panel (PDF)
- ATTACHMENT 6. Dresvyanskaya 1 well composite panel (PDF)
- ATTACHMENT 7. Fersmanovskaya 1 well composite panel (PDF)
- ATTACHMENT 8. Gulyayevskaya Sev 1 well composite panel (PDF)
- ATTACHMENT 9. Kildinskaya Sev 82 well composite panel (PDF)
- ATTACHMENT 10. Krestovaya 1 well composite panel (PDF)
- ATTACHMENT 11. Kurentsovskaya 1 well composite panel (PDF)
- ATTACHMENT 12. Murmanskaya 22 well composite panel (PDF)
- ATTACHMENT 13. Murmanskaya 23 well composite panel (PDF)
- ATTACHMENT 14. Murmanskaya Sev 1 well composite panel (PDF)

ATTACHMENT 15. Murmanskaya Sev 2 well composite panel (PDF)

ATTACHMENT 16. Pomorskaya 1 well composite panel (PDF)

ATTACHMENT 17. Severo-Zapadnaya 202 well composite panel (PDF)

Enquiries:

Project Leader: Dr. Sergey Drachev

sdrachev@arcgeolink.com

Ph: +44 7595 986571

ArcGeoLink Ltd. 48 Tupwood Gardens, Caterham, Surrey CR3 6EW UK