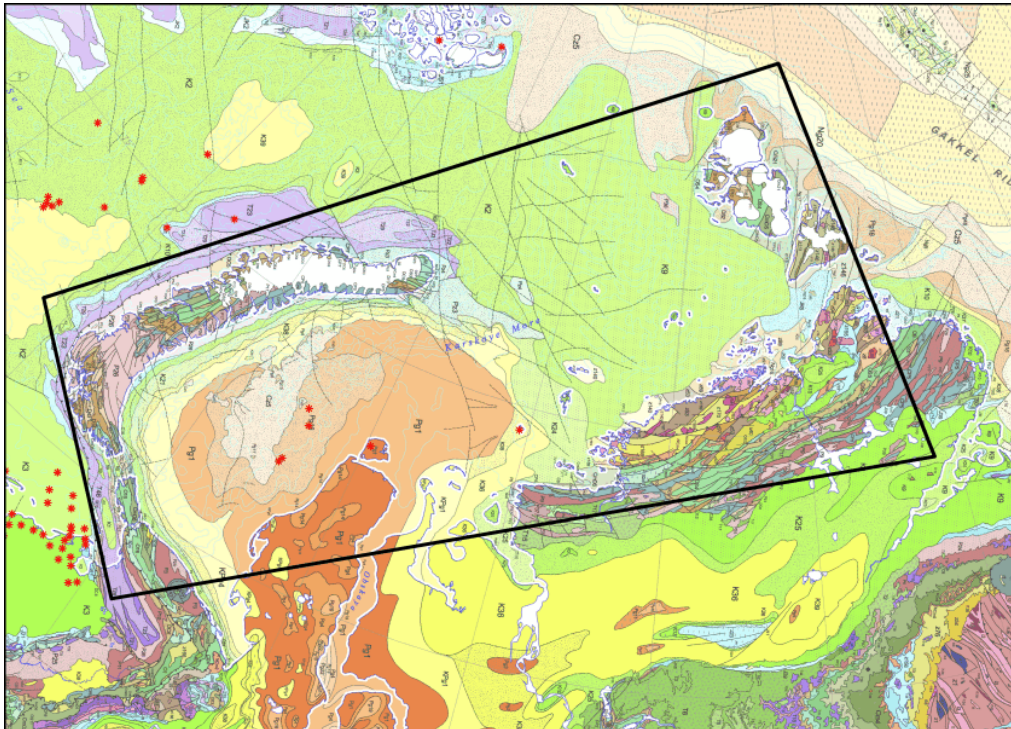


GEOLOGY OF THE GREATER KARA SEA WITH EMPHASIS ON LATE PALEOZOIC TO CENOZOIC UPLIFT AND PROVENANCE HISTORY BASED ON NEW ZIRCON GEOCHRONOLOGY AND FISSION TRACK DATA

A REGIONAL STUDY REPORT



ArcGeoLink Ltd. (UK)

IN COOPERATION WITH OOO "GEOLTSENTER SPBSU" (ST. PETERSBURG, RF)

GEOLOGY OF THE GREATER KARA SEA WITH EMPHASIS ON LATE PALEOZOIC TO CENOZOIC UPLIFT AND PROVENANCE HISTORY BASED ON NEW ZIRCON GEOCHRONOLOGY AND FISSION TRACK DATA

This Report provides data on geology of a vast region of the greater Kara Sea that includes the South and North Kara shelves, Novaya Zemlya and Severnaya Zemlya archipelagoes, Taimyr Peninsula and northern part of the West Siberia. The main data sources were original studies performed by the authors of the report under leadership of Prof. Andrey Khudoley, which include the U-Pb detrital zircon geochronology (24 samples), apatite fission-track (21 sample), and zircon fission-track (7 samples) studies. Additional data were derived from publications, open-file geological reports and results, which helped to constrain interpretations. Apatite and zircon fission track studies have been done for the first time in the project area.

The Report consists of 85 pages including 40 illustrations. It is accompanied by an ArGIS database that includes geological map of the studied region, paleogeographic maps, locations of the cross-sections, sampled sites etc.

Table of Contents:

EXECUTIVE SUMMARY

- 1. INTRODUCTION**
- 2. GEOLOGICAL OVERVIEW**
- 3. REGIONAL LITHOSTRATIGRAPHY**
 - 3.1. Carboniferous of Pai-Khoi, Novaya Zemlya, Cape Zhelaniya, and Taimyr*
 - 3.2. Permian of Pai-Khoi, Novaya Zemlya, Cape Zhelaniya, and Taimyr*
 - 3.3. Mesozoic of Pai-Khoi, Yamal and Taimyr*
 - 3.4. Cenozoic of Yamal and Taimyr*
- 4. OVERVIEW OF PREVIOUS PROVENANCE STUDIES**
 - 4.1. Novaya Zemlya Archipelago*
 - 4.2. Severnaya Zemlya Archipelago*
 - 4.3. Taimyr Peninsula*
- 5. SAMPLING STRATEGY**
- 6. LOW-TEMPERATURE GEOCHRONOLOGY STUDY**
- 7. U-PB GEOCHRONOLOGY OF DETRITAL ZIRCON STUDY**
 - 7.1. Early Paleozoic samples*
 - 7.2. Middle-Late Paleozoic samples*
 - 7.3. Summary of U-Pb data for Paleozoic sedimentary rocks*
 - 7.4. Mesozoic-Cenozoic samples*
 - 7.5. Summary of U-Pb data for Mesozoic-Cenozoic sedimentary rocks*
- 8. PROVENANCE HISTORY AND PALEOGEOGRAPHY OF THE GREATER KARA REGION**
 - 8.1. Triassic*
 - 8.2. Jurassic*
 - 8.3. Cretaceous*
 - 8.4. Cenozoic*
- 9. CONCLUSION**
- 10. REFERENCE LIST**

List of illustrations:

FIGURE 1.1. Index map of and location of the study area in the Siberian Arctic.

FIGURE 2.1. Geological map of the Greater Kara region.

FIGURE 2.2. Tectono-stratigraphic chart of the Greater Kara Sea region.

FIGURE 2.3. Depth-to-basement map of the Barents–Kara Shelf based on seismic reflection and refraction data and satellite altimeter gravity data.

FIGURE 2.4. Regional transect 2-AR showing structure and main sedimentary successions of the Kara Shelf.

FIGURE 2.5. Fragment of a MCS reflection profile showing syn-rift Ordovician (?) siliciclastic succession overlain by Ordovician (?) salt.

FIGURE 2.6. Geological map and cross-section of northwestern part of the Akhmatov Bay (Bol'shevik Island) showing occurrence of post-Permian compressional deformations.

FIGURE 3.1. Stratigraphic correlation chart of the Carboniferous successions of the study area.

FIGURE 3.2. Stratigraphic correlation chart of the Permian successions of the study area.

FIGURE 3.3. Stratigraphic correlation chart of the Mesozoic successions of the study area.

FIGURE 3.4. Stratigraphic correlation chart of the Cenozoic successions of the study area.

FIGURE 4.1. Simplified geological map of the Novaya Zemlya Archipelago showing location of the sampling sites.

FIGURE 4.2. Relative age probability distribution plots for detrital zircon grains from Cambrian to Ordovician sandstones of Southern Island of the Novaya Zemlya Archipelago.

FIGURE 4.3. Relative age probability distribution plots for detrital zircon grains from the Paleozoic successions of northern Novaya Zemlya Archipelago.

FIGURE 4.4. Tectonic structure map of the Taymyr Fold Belt showing location of sampling sites.

FIGURE 4.5. Relative age probability distribution plots for detrital zircon grains from Neoproterozoic to Devonian sedimentary successions of Severnaya Zemlya Archipelago.

FIGURE 4.6. Relative age probability distribution plots for detrital zircon grains from Cambrian samples of the Taimyr Peninsula.

FIGURE 4.7. Relative age probability distribution plots for detrital zircon grains from Permian-Carboniferous and Cretaceous sandstones of the Taimyr Peninsula.

FIGURE 5.1. Geological map of the Greater Kara region showing location of sampling sites for the U-Pb detrital zircon geochronology study.

FIGURE 5.2. Geological map of the Greater Kara region showing location of sampling sites for the Apatite and Zircon fission track studies (AFT and ZFT).

FIGURE 6.1. AFT-based thermal evolution (HeFTy models) for samples from Novaya Zemlya Archipelago.

FIGURE 6.2. AFT-based thermal evolution (HeFTy models) of samples from Kara Shelf.

FIGURE 6.3. AFT-based thermal evolution (HeFTy models) of samples from the Taimyr Fold Belt.

FIGURE 6.4. Distribution of the AFT ages within the study area.

FIGURE 6.5. Distribution of ZFT ages within the study area.

FIGURE 7.1. Cumulative probability diagram for early Paleozoic samples.

FIGURE 7.2. Geological map of the Greater Kara region showing location and relative age probability distribution plots for detrital zircon grains from early Paleozoic samples.

FIGURE 7.3. Geological map of the Greater Kara region showing location and relative age probability distribution plots for detrital zircon grains from the middle-late Paleozoic samples.

FIGURE 7.4. Cumulative probability diagram for all studied Mesozoic-Cenozoic samples.

FIGURE 7.5. Geological map of the Greater Kara region showing location and relative age probability distribution plots for detrital zircon grains from the Triassic-Middle Jurassic samples.

FIGURE 7.6. Geological map of the Greater Kara region showing location and relative age probability distribution plots for detrital zircon grains from the Upper Jurassic-Cenozoic samples.

FIGURE 7.7. Inferred direction of the clastic supply based on the detrital zircon ages.

FIGURE 8.1. Paleogeographic map of the Greater Kara region for Induan time.

FIGURE 8.2. Paleogeographic map of the Greater Kara region for Hettangian-Sinemurian time.

FIGURE 8.3. Paleogeographic map of the Greater Kara region for Bajocian – Bathonian time.

FIGURE 8.4. Paleogeographic map of the Greater Kara region for Kimmeridgian – Volgian time.

FIGURE 8.5. Paleogeographic map of the Greater Kara region for Valanginian-Hauterivian time.

FIGURE 8.6. Paleogeographic map of the Greater Kara region for Albian time.

FIGURE 8.7. The north-south seaway system between Tethys and Arctic in Paleogene.

FIGURE 8.8. Bartonian-Priabonian semi-closed marine basin in West-Siberia.

List of attachments (PDF Format)

ATTACHMENT 1. Legend for key stratigraphic sections.

ATTACHMENT 2. Composite panel of Carboniferous and Permian stratigraphic key sections.

ATTACHMENT 3. Composite panel of Mesozoic stratigraphic key sections.

ATTACHMENT 4. Composite panel of Cenozoic stratigraphic key sections.

List of supplementary files (MS Excel Format)

U-Pb Detrital Zircon data

Apatite Fission Track data

AFT-HeFTy-models

Zircon Fission Track data

Enquiries:

Project Leader: Dr. Sergey Drachev

sdrachev@arcgeolink.com

Ph: +44 7595 986571

ArcGeoLink Ltd. 48 Tupwood Gardens, Caterham, Surrey CR3 6EW UK